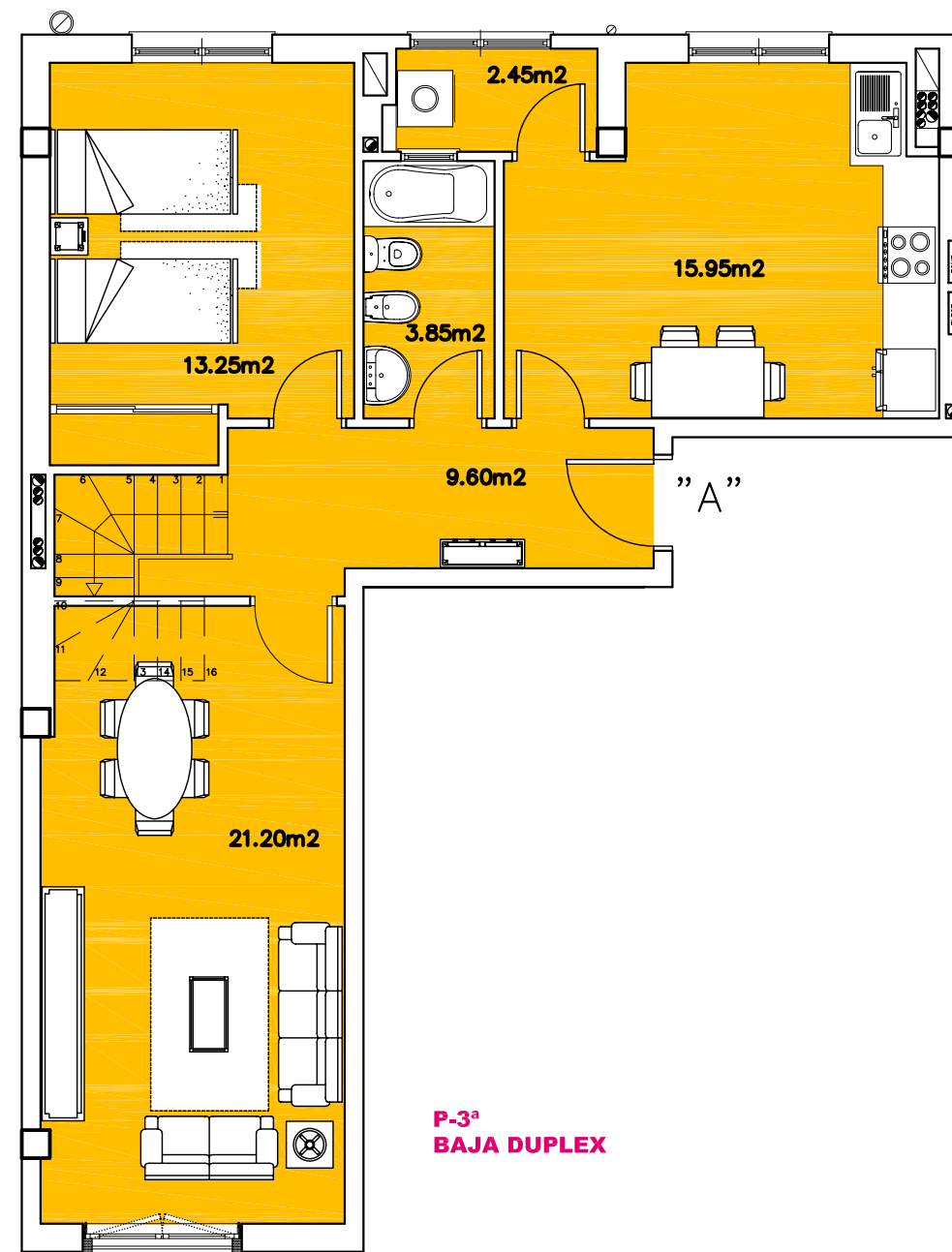
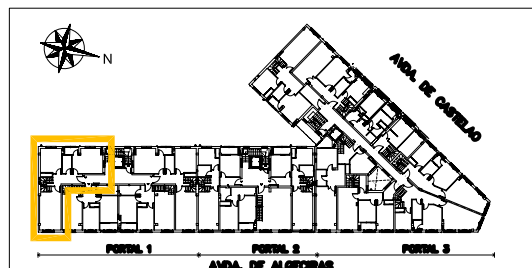
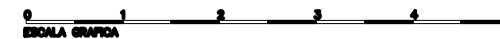


**P-BAJO CUBIERTA
ALTA DUPLEX**



**P-3ª
BAJA DUPLEX**



VIVIENDA DUPLEX (3ª Y BAJO CUBIERTA)

PORTAL 1
 VIVIENDA A
 P. BAJA DUPLEX = 66.30 m²
 P. ALTA DUPLEX = 49.75 m²
 SUPERFICIE UTIL TOTAL = 116.05 m² +T

